

STD ENGINE

- Engine power: 110 hp (opt 150 hp)
- Bow thruster(opt)
- Transmission: Shaft-line with hydraulic V-drive reverse gear
- Cooling system: Heat exchanger, anti-siphon valve.
- Sea-water strainer: Sea-water strainer
- Fuel tank: 2 tanks with gauge on electrical panel. 500lt
- Fuel filter, water separator
- Shut-off valve: fuel shut-off valve on each tank with selection system.
- Control panel: Engine control panel with hours meter, engine stop and tachometer.
- Alternator: Alternator with battery isolator.
- Ventilation: Ventilation with 3 natural inlets and electric mechanical extract.
- Bilge: Separate engine bilge.
- Access: Access to the engine from front and both sides.
- 4-blade folding propeller
- Insulation: Carefully-designed foam acoustic and thermal insulation.



PLUMBING

- Water tanks: 2 polyethylene water tanks with inspection holes and electric gauges 680lt capacity
- Electric bilge pump: With strainer, controlled from electrical distribution panel
- Manual bilge pump: Operated from cockpit.
- Bilge sump: Sump built into keel, access to strainer
- Hot water: Water-heater via heat-exchanger
- Hot water tank: Pressurized water pump unit 50lt.
- Shower waste: Electric shower pump

ELECTRICITY

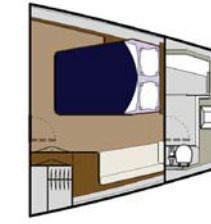
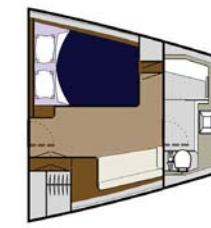
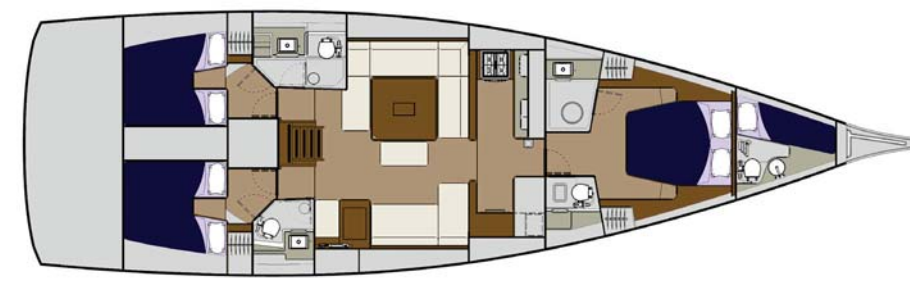
- Circuit:12 V
- Distribution panel: 18 functions with circuit-breakers, voltmeter 12V / 220V
- Socket: 12 V on electrical distribution panel.
- Isolator: 1 per set of batteries (Descente)
- 12V / 60 Ah battery charger
- 12V / 220 V - 2000W inverter OPT
- 12V & 220V electric outlets in galley, chart table and each cabin
- Engine Battery = 140 Ah
- Service Batteries = 3 * 140 Ah

MISCELLANEOUS

- Winch handles: 2 winch handles with bin.
- Owner's pack: Owner's pack with Owner's Manual.
- Earthing: Rigging grounded.

MAIN FACTORY FITTED OPTIONS

- Forepeak conversion into skipper's cabin
- shallow draft (2.2m).
- Spinnaker/gennaker gear.
- Sails on quotation.
- Electrical in mast furling.
- Carbon fibre longer mast with rod rigging.
- Lacquered mast and boom.
- Carbon fibre V boom.
- Carbon fibre steering wheels.
- Staysail rig and equipment.
- Cockpit bimini.
- Cockpit cushions and sunbathing mattress.
- Gori folding prop with "overdrive".
- gangway.
- Navigation instruments.
- Gas / electric stove and oven.
- Air conditioning.
- Extra refrigerators.
- Wine cooler.
- Water maker.
- Dishwasher.
- Washer dryer.
- Built in HI FI/ TV / Video equipment.
- Built in safe.



Architecte / Architect: Felci Yachts

Longueur Hors tout / Overall length : 17.15 m
 Longueur de coque / Hull length : 16.30 m
 Longueur flottaison / Waterline length : 15.17 m
 Largeur coque / Max beam : 5.05 m
 Déplacement léger / Light displacement : 17 625 Kg
 Tirant eau / Draft : 2.50 m
 Poids lest / Keel weight : 4900 Kg
 Capacité Go / Fuel tank capacity : 500 L
 Capacité eau / Water tank capacity : 730 L
 Puissance moteur / Engine power : 110 hp

Surface voiles / Sail area : 152.7 m²
 GV / Mainsail : 80.4 m²
 Génois / Genoa : 73.3 m²
 I : 21.99 m
 J : 6.35 m
 P : 20 m
 E : 6.20 m



www.dufour-yachts.com



CREDITS PHOTOS: J.M. LUT / Y. RONZIER - Document non contractuel - 2013



CONSTRUCTION

- **Hull:** Composite sandwich hand-laminated polyester.

- **PVC panels** are vacuum-bonded for better adhesion to laminate.
- **Structure:** Hull bottom counter-moulded, floors laminated into the hull.
- **Gelcoat:** NPG gelcoat with first mat impregnated with NPG resin forming an optimum barrier against osmosis.
- **Decoration:** Grey for waterline and decoration line
- **Deck:** Sandwich with injected PVC foam core
- **Ballast:** Keel in cast iron with stainless steel bolts bear on stainless back-plates (optional shallow draft)
- **Rudder:** Semi-elliptical shape, filled with closed-cell epoxy foam.
- **Rudder stock:** Solid stainless steel.
- **Rudder quadrant:** Stainless steel cables and quadrant 610 mm diamter.
- **Non-slip deck surface:** Non-slip structured deck surface.

DECK HARDWARE:

- **Mooring:** 1400W electrical windlass (LEWMAR) fixed stainless steel anchor arm (32kg delta anchor and 100mt chain OPT)
- **L ED navigation light** and tri-color mast head light
- **Bow pulpits:** Stainless, opening for easy access and for spinnaker handling
- **Stern pulpits:** Jackstaff bracket, navigation light, and opening life-lines with hook.
- **Stanchions:** With 2 rows of life-lines, one opening gate each side.
- **Mooring cleat:** 6, aluminium.(SIZE)
- **Chainplates:** 2 backstay chainplates, external side deck chainplates
- **Fuel deck fillers:** 2
- **Water deck fillers:** 3
- **Safety gear:** Safety harness padeye in cockpit floor and wood hand rail along coachroof
- **Mainsheet tracks:** On coachroof with adjusting car (2440 mm). STD
- **Genoa tracks:** 2 genoa sheet tracks, plunger-adjustable low-lead cars
- **Genoa self tacking track**
- **Through-deck fitting:** Stainless swan-neck for electrical and electro-nic cables
- **Deck organizers:** 2 deck 4-sheave organizers for halyard, sheet and reef line returns.
- **Halyard winches:** 2 halyard winches (T 55 LEWMAR) on coachroof. Mainsail halyard side winch ELECTRICAL
- **Primary winches:** 2 genoa sheet winches (T55 LEWMAR) at helm positions
- **Jamcleats:** 2 rows of jamcleats port / starboard level with the companionway
- **Furler line jamcleats:** 1 at aft end of sidedeck
- **Hatch covers:** Sliding companionway hatch in Plexiglas.
- **Flush deck hatches:** 5 X T60 + 6 X T20 flush hatches on deck (LEWMAR)
- **Sprayhood**
- **Cockpit bench seats:** Teak covered. (1975 mm)
- **Helmsman's seat:** Teak covered.
- **Cockpit floor:** Teak cockpit floor[opt]
- **Port bench seat:** convertible into a sun deck.
- **Lockers:** 1 large side locker to Stbd with strut-assisted closing and fixing for padlock.
- **Helm:** Grp instrument console with 2 900mm diameter steering wheels BLACK)
- **Cockpit table:** wood cockpit table with grp structure
- **Cockpit table Storage:** storage space (refrigerator and sink OPT)
- **Handrail:** Stainless, on cockpit table + 1 in each steering column
- **Shower:** Hot and cold water in aft central section
- **Shore supply:** Stbd helm position
- **Bathing ladder:** Foldaway stainless bathing ladder.
- **Engine controls:** At starboard helm position
- **Compasses:** 2 on columns
- **Gas locker:** Under port helmsman's seat
- **BIB locker:** Under floor
- **Emergency tiller:** A stainless tiller with deck plate for access

SAIL LOCKER / CREW CABIN:

- **Large lockable deck hatch** T60 hatch



- **Ladder, handrails**
- **Bow thruster access**
- **Chain locker** and windlass access
- **As an option, the forepeak** can be fitted as a 1 or 2 person crew cabin

TENDER GARAGE:

- **Opening transom** giving access to swim platform / tender garage with ELECTRIC mechanism /OPT
- **Tender (opt)** can be 3,10m with inflatable bottom / (OPT)
- **Tender inflating/deflating electric pump** (OPT)
- **Access to tender garage** is from deck and transom
- **Access to steering system** and (opt) autopilot

RIGGING & SAILS:

- **Mast:** Anodized aluminium with 2 levels of swept spreaders
- **Rigging:** 9/10 fractional
- **Mast stepping:** On deck
- **Lights:** Anchor and steaming lights and deck flood (LED)
- **Topping lift:** Boom topping lift cleats.
- **Boom:** Anodized aluminium equipped for 2 continuous reefs.
- **Furler:** Manual roller furling genoa system (FACNOR).
- **Standing rigging:** Continuous in stainless single-strand cable, chrome-plated bronze rigging screws, comprising: forestay, backstay bridle with twin rigging screws, inter and lower shrouds.
- **Backstay:** double mechanically adjusted
- **Running rigging:** "Running rigging in pre-stretched textile including: main and genoa halyards, boom topping lift, main and genoa sheets, 2 continuous reef lines, leech tensioner, 1mainsheet car adjustments, furling line, downhaul tackle. (MAIN and JIB halyard in spectra)
- **Mainsail:** 2 wide reef strips, with battens and bag.(Dacron)
- **Genoa:** Furling genoa with UV-protection (Dacron)

INTERIOR:

- **Woodwork:** Moabi finish with various massive wood parts. (Oak is an option) TEAK
- **Floors:** Moabi laminate.
- **Doors:** Fitted with twin-bolt anti-vibration locks, cabin doors can be blocked in the open position
- **Cushions:** Saloon cushions and cabin mattresses fitted with removable covers.
- **Head-liner:** Lined with wood.
- **Versions:** 3 cab 2 showers/1WC , 4 cab 2 shower/1 WC, 5cab 2 showers/1WC
- **Hull:** 8 hull windows
- **Coachroof,** fixed: 5 fixed ports
- **Coachroof,** opening: 3 opening ports with curtains
- **Hatches:** 11 deck hatches
- **Indirect lighting:** Under ceiling
- **Lighting:** Numerous spots and reading lights.
- **Courtesy light:** Low-level lighting around saloon furniture

COMPANIONWAY

- **Companionway hatch:** Sliding companionway hatch and door in plexiglas with stops and lock.

- **Steps:** Curved wooden steps
- **Engine cover:** Hinged wooden engine cover with gas struts.
- **Handrails:** 2
- **Wine cellar:** Wine cellar beneath floor in companionway

SALOON

- **Partially raised saloon position** allows a front panoramic view.
- **Plenty of natural light and ventilation** is guaranteed by the front, side fixed plexi and the hatches in the coachroof
- **Direct and indirect lights**
- **Night courtesy light** in the saloon,
- **Saloon :** U-shaped banquette on port side (2.1 m)
- **Central banquette:** Sliding, with raising back rest
- **Table:** 3-function saloon table
- **L shaped relaxing sofa** to starboard side

LEAFING TV (opt)

- **Stowage:**
 - - stowage under seats and behind backrests.
 - - top lockers with doors and bookshelf to port and stbd
 - -hatches under-floor

GALLEY

- **Configurations:** the galley is located one step down forward of the saloon and it runs across the full beam of the boat
- **Worktop:** 'Corian.' synthetic resin with wooden fiddle.
- **Sink:** Stainless steel bowl sink in port module
- **Water:** Hot and cold pumped water with brushed stainless single lever mixer tap.
- **Gas cooker:** 3-burner gas cooker with oven and grill, on gimbals, with stainless hand rail in port side
- **Refrigerators:** 130 lt front opening fridge Crockery storage: Dowels to retain crockery when heeling.
- **Freezer:** 65 lt front opening fridge (Std)
- **Stowage:** various lockers
- **220 V microwave oven:** In stbd hull cubby-hole
- **Pump:** Sea-water pump built-in under fl oor to stbd
- **Waste bin:** Sort compartments, to port



CHART TABLE (plan # 1)

- **Starboard chart table** facing forward
- **Table** with internal storage space for laptop and papers
- **1 ceiling light,** 1 reading light
- **Pivoting console:** holding the instruments and electrical distribution panel
- **Instrument console:** Instrument console in top locker
- **Radio:** Radio/CD player with 2 speakers, MP3 compatible
- **Other:** Electrical distribution panel, Plexiglas cover, outboard side

CHART TABLE (plan # 2)

- **Starboard chart table** facing aft
- **Table** hinged to aft bulkhead pivoting forward
- **1 ceiling light,** 1 reading light
- **Pivoting console:** holding the instruments and electrical distribution panel
- **Instrument console:** Instrument console in top locker
- **Radio:** Radio/CD player with 2 speakers, MP3 compatible
- **Other:** Electrical distribution panel, Plexiglas cover, outboard side

FWD CABIN (Front Centre bed plan # 1)

- **Double Berth:** 200 Å~ 160 cm centred placed in the front bhd
- **Mattress:** 10 cm thick foam mattress with washable cover.
- **12 V /230 V socket**
- **4 opening hatches** above the bed
- **Stowage:**
 - Side top lockers along side of hull.
 - 2 hanging lockers with shelves.
 - Below berth.
 - 2 tidy pockets
- **Access:** To navigation instrument transducers

FWD HEAD (plan # 1)

- **The owner cabin** has an en suite toilette and a separated shower area
- **WC:** Electric sea toilet + basin with single-lever mixer tap
- **Wash-basin:** Polyester bowl with 'Corian.' synthetic resin top

- **Water:** Hot and cold water, chrome-plated brass single-lever mixer tap and shower head.
- **Discharge:** Direct, via an electric pump.
- **Mirror:** Large mirror
- **Grating:** 'Corian.' synthetic resin (std) or teak (std)
- **Ventilation:** Via deck panel or opening port.
- **Cupboards:** Storage unit

FWD CABIN (Side bed plan # 3)

- **Double Berth:** 200 Å~ 160 cm located on port aft side in the maximum beam
- **Mattress:** 10 cm thick foam mattress with washable cover.
- **12 V /230 V socket**
- **2 opening hatches** above the bed
- **Stbd side** with a sofa and a vanity with mirror
- **Stowage:**
 - Stbd side top lockers along side of hull.
 - 1 double door hanging lockers with shelves.
 - Below berth.
 - 2 tidy pockets
- **Access:** To navigation instrument transducers

FWD CABIN (Island bed plan # 4)

- **Double Berth:** 200 Å~ 160 cm located on port side fwd with a double sie access
- **Mattress:** 10 cm thick foam mattress with washable cover.
- **12 V /230 V socket**
- **2 opening hatches** above the bed
- **Stbd side** with a sofa and a vanity with mirror
- **Stowage:**
 - Stbd side top lockers along side of hull.
 - 1 double door hanging lockers with shelves.
 - Below berth.
 - 2 tidy pockets
- **Access:** To navigation instrument transducers

FWD HEAD (plan # 3,4)

- **The owner cabin** has an en suite toilette and a shower located in the front part of the cabin
- **WC:** Electric sea toilet on stbd side
- **Wash-basin:** Polyester bowl with 'Corian.' synthetic resin top
- **Water:** Hot and cold water, chrome-plated brass single-lever mixer tap and shower head.
- **Shower:** separated area by a plexiglass door, located on port side with an automatic electric pump.
- **Mirror:** Large mirror
- **Grating:** 'Corian.' synthetic resin (std) or teak (option)
- **Ventilation:** Via deck panel or opening port.
- **Cupboards:** Storage unit

FWD CABIN (Double front cabin plan # 2 Opt)

- **Split double bed**
- **Mattress:** 10 cm thick foam mattress with washable cover.
- **12 V /230 V socket**
- **2 or 4 opening hatches** above the bed per cabin
- **Stowage:**
 - Top lockers along side of hull.
 - 1 hanging lockers with shelves.
- **Access:** To navigation instrument transducers

FWD HEAD (plan # 2 Opt)

- **The two front cabins** have an en suite toilette and a separated shower area
- **WC:** Electric sea toilet + basin with single-lever mixer tap
- **Wash-basin:** Polyester bowl with 'Corian.' synthetic resin top
- **Water:** Hot and cold water, chrome-plated brass single-lever mixer tap and shower head.
- **Discharge:** Direct, via an electric pump.
- **Mirror:** Large mirror
- **Grating:** 'Corian.' synthetic resin (std) or teak (option)



- **Ventilation:** Via deck panel or opening port.

AFT CABINS (plan # 1)

- **Berth:** 198 x 195 cm approx.
- **Mattress:** 10 cm thick foam mattress with washable cover.
- **Stowage:** Hanging locker with shelves and top lockers along side of hull.
- **Ventilation and Natural Light:** 3 openable hatches and 1 fixed hatches guarantees plenty of light
- **Artificial Light:** general roof lights and 2 reading lights in each cabin
- **12V & 230V electric outlets** in each cabin
- **Technical area:** Between aft berths.
- **Soundproofing:** Double bulkhead provides acoustic and thermal insulation from adjoining engine compartment.

AFT HEADS (plan #1)

- **Access:** both from saloon and cabin
- **WC:** Manual sea toilet
- **Wash-basin:** Wash-basin unit with basin in Corian.C synthetic resin.
- **Water:** Hot and cold water, chrome-plated brass single-lever mixer tap and shower head.
- **Discharge:** Direct shower discharge electric pump.
- **Cupboards:** 1 high-level 2-door storage unit with mirror
- **Mirror:** Large mirror
- **Grating:** 'Corian.' synthetic resin (std) or teak (option)
- **Ventilation:** Via deck opening port.
- **Other:** Head to port and stbd. Separate shower to port

AFT CABINS (plan # 2)

- **Berths:** 2 X double bed cabin 198 x 195 cm and 1 X double cabin with one bed on top of the other.
- **Mattress:** 10 cm thick foam mattress with washable cover.
- **Stowage:** Hanging locker with shelves and top lockers along side of hull.
- **Ventilation and Natural Light:** 3 openable hatches and 1 fixed hatches guarantees plenty of light
- **Artificial Light:** general roof lights and 2 reading lights in each cabin
- **12V & 230V electric outlets** in each cabin

AFT HEAD (plan #2)

- **Access:** both from saloon and port cabin
- **WC:** Manual sea toilet
- **Wash-basin:** Wash-basin unit with basin in Corian.C synthetic resin.
- **Water:** Hot and cold water, chrome-plated brass single-lever mixer tap and shower head.
- **Shower:** Separate shower to port
- **Discharge:** Direct shower discharge electric pump.
- **Cupboards:** 1 high-level 2-door storage unit with mirror
- **Mirror:** Large mirror
- **Grating:** 'Corian.' synthetic resin (std) or teak (option)
- **Ventilation:** Via deck opening port.